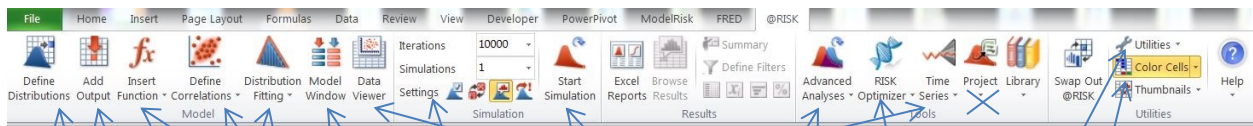


Brief comparison of @RISK version 7.6 and 8.0

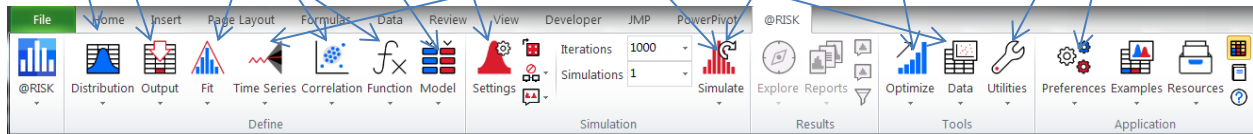
April 15, 2020

Overall, updates from @RISK 7.6 to 8.0 have relatively minor, but the most noticeable changes have been nice improvements. Here is a quick comparison of the @Risk 7.6 menu ribbon and the new design in @Risk 8.0

7.6



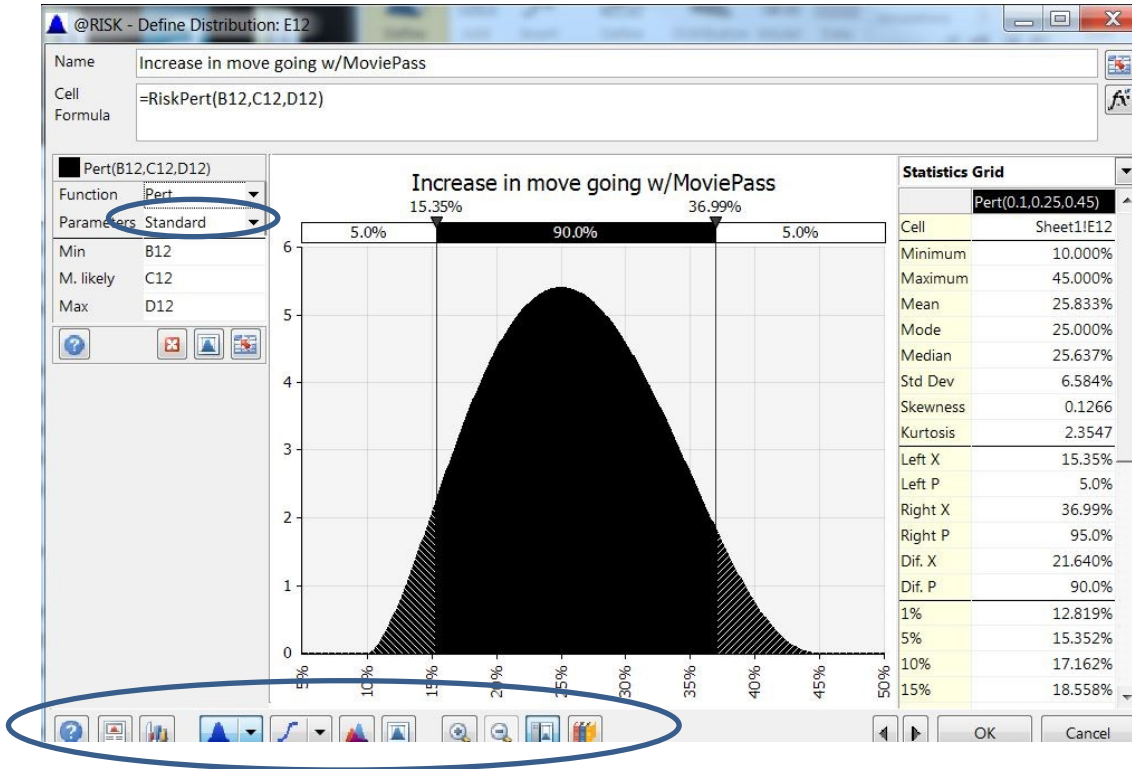
8.0



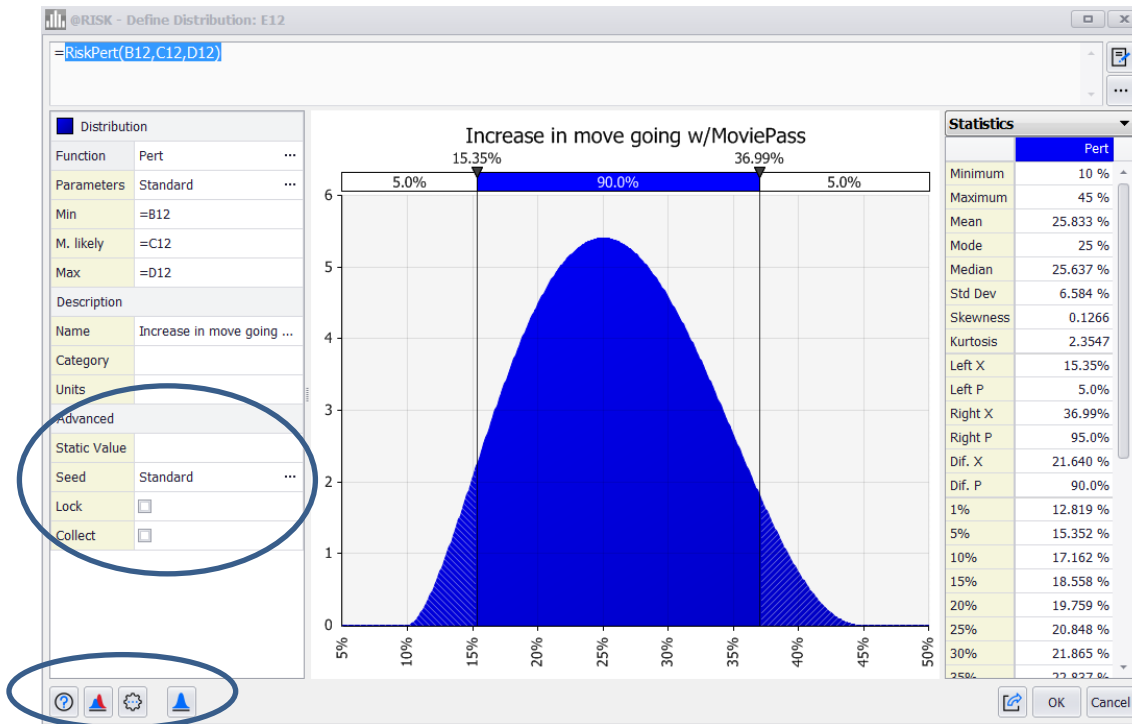
The main differences involve rearrangement of the ribbon menu, some consolidation, and visual updating. The overall functionality of @RISK is almost unchanged (with the notable exception that integration with Microsoft Project is not currently provided), but the performance of the software has been significantly improved.

One specific point is that, when choosing distributions, the dialog window has changed somewhat:

7.6



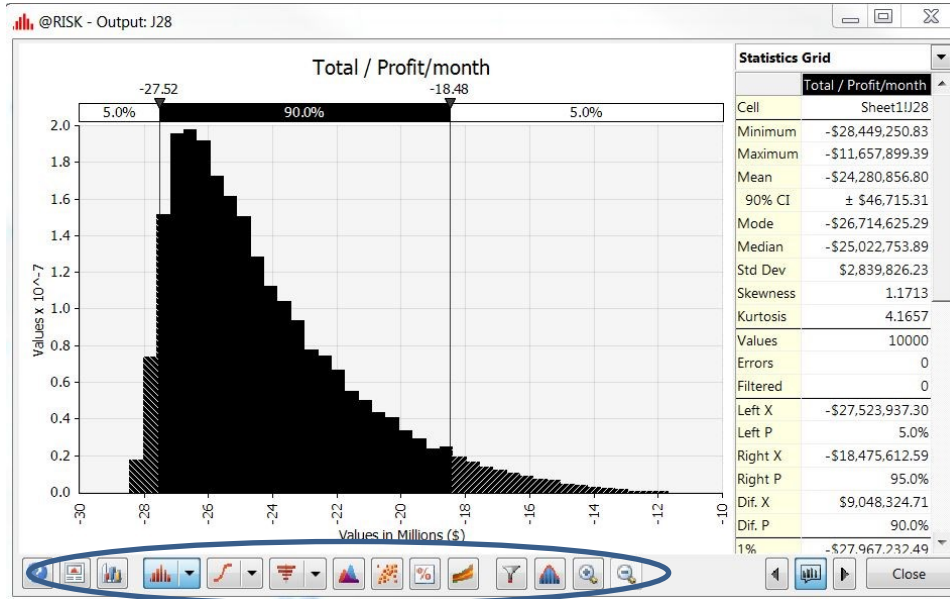
8.0



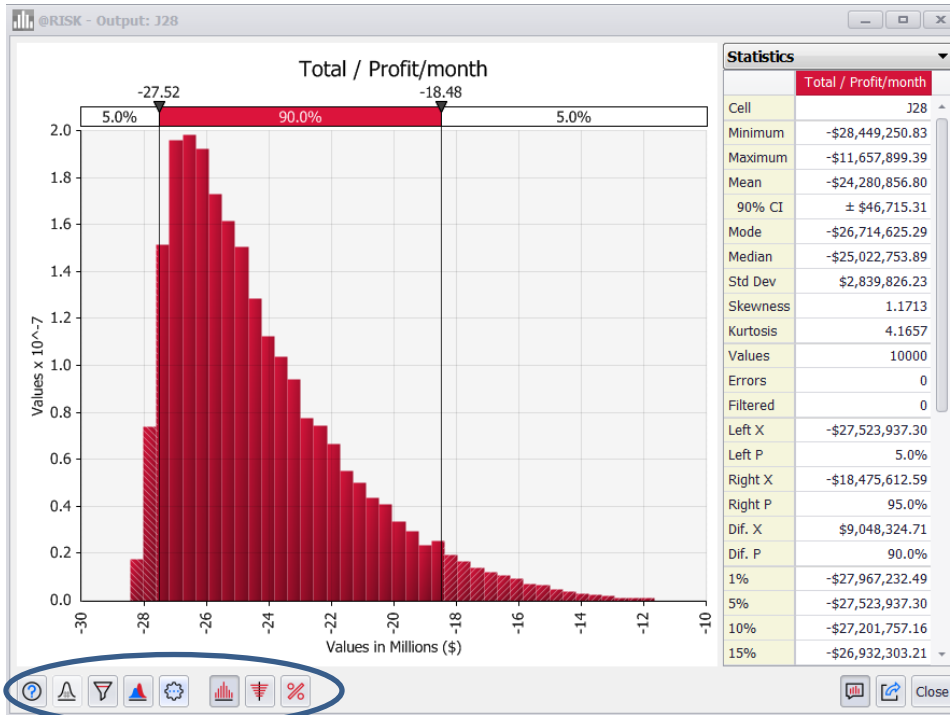
The differences here involve mainly putting more of the options directly in the dialog rather than requiring pull-down menus (e.g., the Advanced settings) and some consolidation of choices in the bottom ribbon (highlighted).

Related to this, the output window has similar changes:

7.6



8.0



Here the differences are in the bottom bar where the separate choices have been consolidated into larger (and more intuitive categories). Making the adjustments from the instructions in the text should therefore be straightforward.